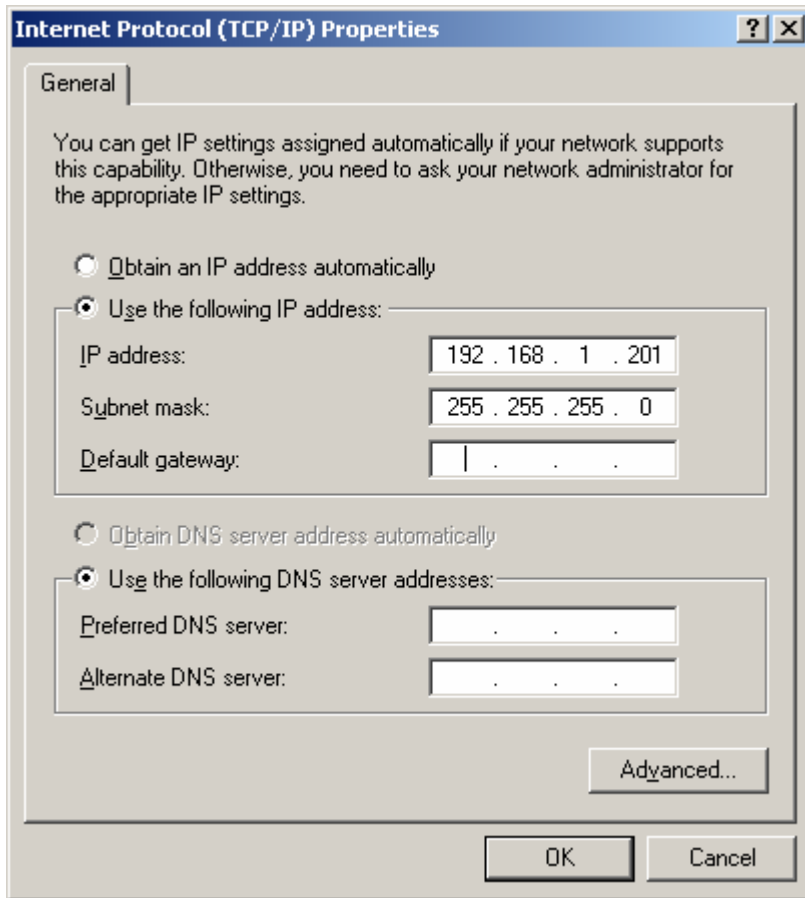


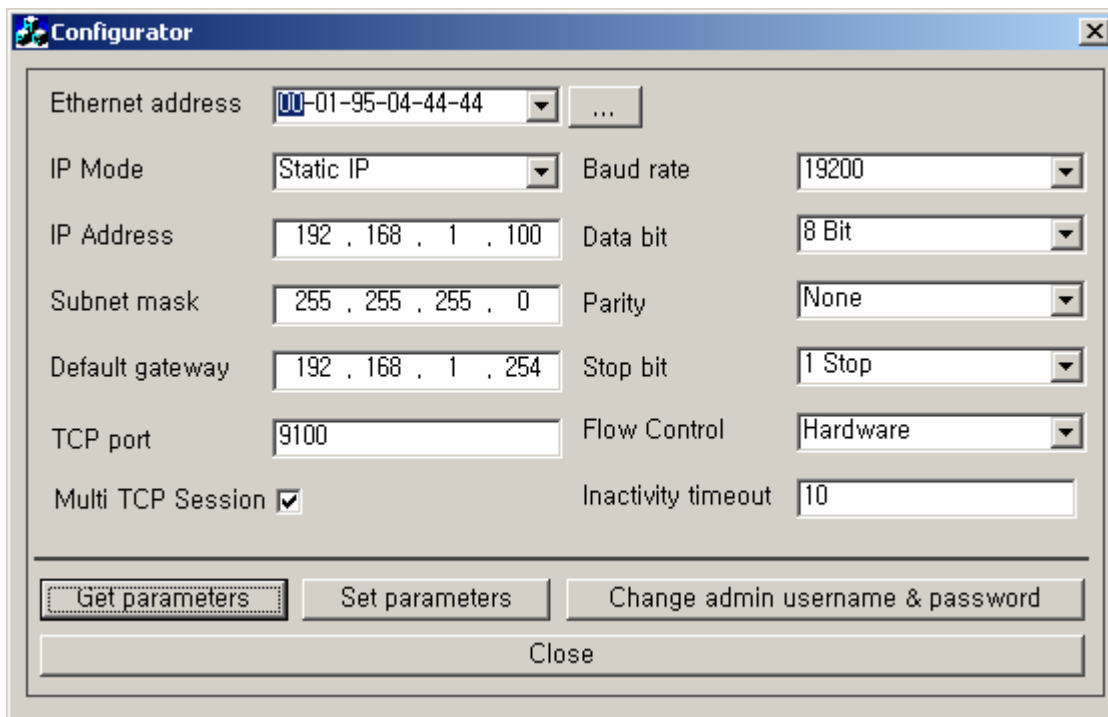
# Uniwell ECR with SRP350 & SRP270 Ethernet Interface

1. Make sure your PC IP address set as this:



2. Then run "Configurator".
3. Click "Brower" to get Printer MAC address.

4. Change all value as follow



The screenshot shows a 'Configurator' window with the following settings:

Field	Value
Ethernet address	00-01-95-04-44-44
IP Mode	Static IP
IP Address	192 , 168 , 1 , 100
Subnet mask	255 , 255 , 255 , 0
Default gateway	192 , 168 , 1 , 254
TCP port	9100
Multi TCP Session	<input checked="" type="checkbox"/>
Baud rate	19200
Data bit	8 Bit
Parity	None
Stop bit	1 Stop
Flow Control	Hardware
Inactivity timeout	10

Buttons at the bottom: Get parameters, Set parameters, Change admin username & password, Close.

Note: 192.168.1.100 for KP1  
192.168.1.101 for KP2  
192.168.1.102 for KP3  
192.168.1.103 for KP4  
192.168.1.104 for KP5  
192.168.1.105 for KP6  
192.168.1.106 for KP7  
192.168.1.107 for KP8

5. Click "Set parameters" to save the changes.

Monday, 1 March 2004